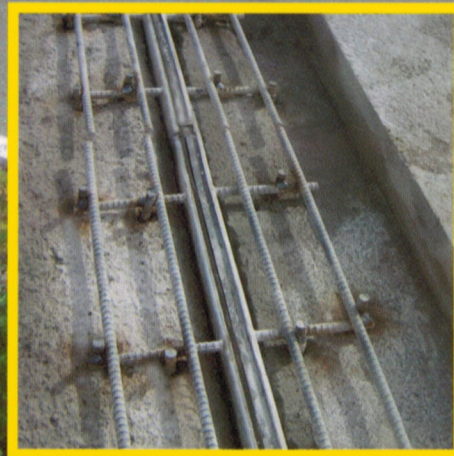
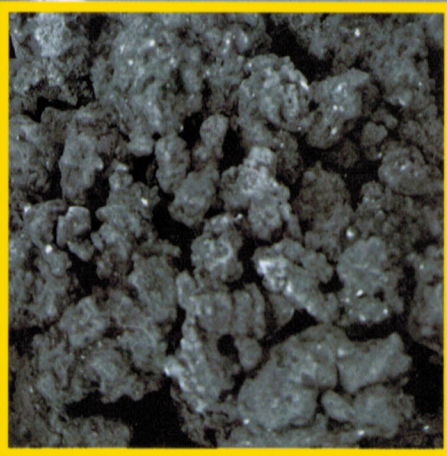


# FALCON ASPHALT MIXTURE

FOR SEAMLESS DILATATION JOINTS

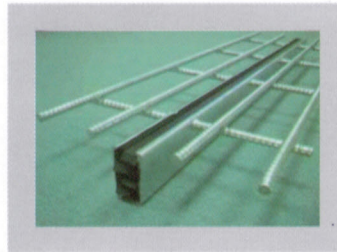


## Technical elements of a dilatation joint

- **Falcon**

is a highly-polymerised asphalt mixture that has the properties of sealing masses and mastic asphalt, with a high percentage highly-polymerised bituminous binders, special additives and suitable aggregate.

- structural support with rubber inlay – element length: 1.5 m
- anchoring elements:  $\varnothing 13$  mm
- basic coating (primer)
- bituminous reinforcing strip
- Falcon bituminous adhesive tape
- sealing inlay made of foam rubber

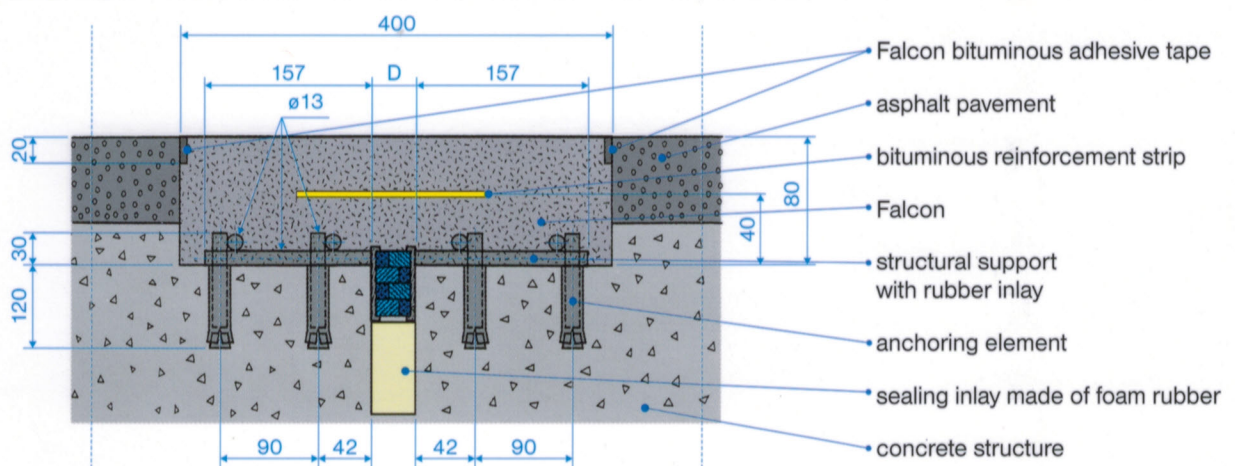


## Fields of use

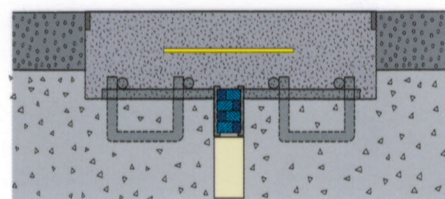
- bridging structures spanning up to 50 m, allowed movement  $40 \text{ mm} \pm 20 \text{ mm}$
- rehabilitations of existing structures
- new constructions

## Cross-section view of an installed dilatation joint

- standard size: 400 mm (W) x 80 mm (H) and above



- for new constructions, anchoring elements are built into the concrete structure



# Installing a dilatation joint

1



- removing an old, damaged dilatation joint
- cleaning and preparing the base – the trough of the dilatation joint

2

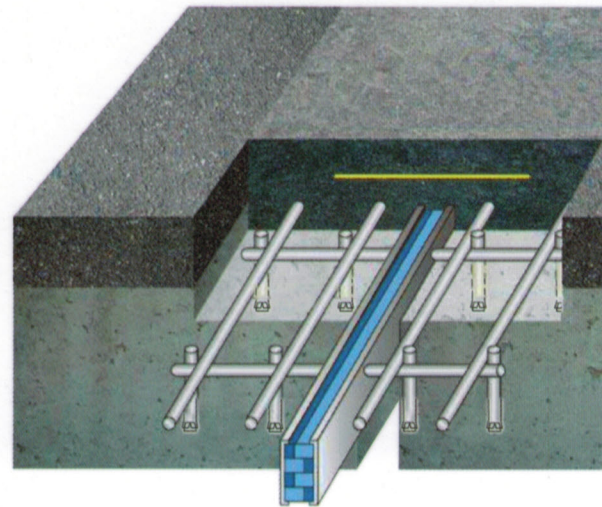


- placing the support
- boring holes for elements
- driving in

5



- applying the base coating onto the concrete surface and the dilatation supporting structure



7



- embedding the Falcon asphalt mixture in two layers

8



- first protective layer, with troweling

9



- placing the bituminous reinforcement strip

10



structural  
anchoring  
anchors

3



- welding anchors to the structural support

4



- clipping the anchors to the required height of the structural support



6



- preparing the **Falcon** asphalt mixture – it is heated in the cooker to the embedding temperature (160 to 170° C)



11



- placing the Falcon bituminous adhesive tape onto the line of contact between the existing asphalt and the Falcon mixture

- embedding the second, final asphalt layer

12



- finalised dilatation joint, sprinkled with crushed silica aggregate

## Advantages of dilatation joints

- simple and quick installation (shorter installation times and less costly traffic closures)
- execution is possible on semi-closed roads
- transverse or longitudinal installation in any lengths
- dilatation joints allow for embedding asphalt layers of any width and thickness
- drivers and the environment of the bridging structure exposed to no vibrations or disturbing noise generated by the passage of vehicles – continuous contact
- **Falcon** is a prefabricated mixture (packaged in 20 kg bags) that ensures uniform quality irrespective of the working conditions in the embedding process (temperature, humidity, mixing ratio)



- in winter conditions, salt ingress into the structure is not possible – watertightness
- no limitations imposed on winter maintenance, i.e. snow ploughing (there is no contact)
- dilatation joints do not require water drainage
- a variant allowing drainage is also possible, where porous asphalt is incorporated into the wearing course of the pavement
- simple replacement at the time of overlaying the wearing course on the structure

## Seamless dilatation joint with Falcon asphalt mixture



- noiseless
- simple execution
- guaranteed long lifetime
- resistant to demanding climatic conditions

- suitable for heavy duty traffic loads
- no maintenance required
- the prefabricated **Falcon** mixture ensures uniform quality of execution and meets the criteria set by the current European standards



**Falcon for safety and comfort on the roads!**

Representative and importer  
**Interchem Handelsgesellschaft mbH**  
Moritschstr. 11, A-9500 Villach - Austria  
Phone: ++43-4242-25130  
Fax: ++43-4242-25130-15  
E-mail: office@interchem.at

Contractor

Manufacturer  
**Heat Rock Kohgyo Co., Ltd.**  
Ebara Niigata Bldg. 3F 16-4 Shinkocho  
Niigata-city 950-0965  
Phone: ++81-25-283-1500  
Fax: ++81-25-283-6501